

Report No.: 238550813b6 001

Page 1 of 6

Client: CHIMEI Corporation
No.398, Sec. 1, Zhongzheng Rd., Rende Dist., Tainan City 717010, Taiwan,
R.O.C.

Test item(s): ACRYLONITRILE-BUTADIENE-STYRENE COPOLYMER

Identification/Model No(s): POLYLAC® PA-746H

Sample obtaining method: Sending by customer

Condition at delivery: Test item complete and undamaged.

Sample receiving date: 2022-12-02

Testing period: 2022-12-02 – 2023-01-03

Place of testing: TÜV Rheinland (Shanghai) Co. Ltd.

Test specification:

According to RoHS (recast): Restriction of the Use of Certain Hazardous Substances in Electrical and Electronic Equipment, 2011/65/EU Annex II and its amendment Directive (EU) 2015/863: Total Content of Lead, Cadmium, Mercury, Chromium VI, Polybrominated Biphenyls, Polybrominated Diphenyl Ethers; and Benzylbutyl phthalate (BBP), Dibutyl phthalate (DBP), Bis(2-ethylhexyl) phthalate (DEHP), Diisobutyl phthalate (DIBP)

Halogen (Fluorine, Chlorine, Bromine, Iodine)

Test result:

Pass

Refer to result page

For and on behalf of
TÜV Rheinland Taiwan Ltd.

Arthur Cheng

Arthur Cheng/Project Manager
Name/Position

2023-01-03
Date



Sample information is provided by customer. Test result is drawn according to the kind and extent of tests performed. This test report relates to the above mentioned test sample. Without permission of the test center this test report is not permitted to be duplicated in extracts. This test report does not entitle to carry any safety mark on this or similar products. "Decision Rule" document announced in our website (<https://www.tuv.com/landingpage/en/qm-gcn/>) describes the statement of conformity and its rule of enforcement for test results are applicable throughout this test report..

Test Report No.: 238550813b6 001

Page 2 of 6

Test Method : Total Cadmium, Lead, Mercury, Chromium
 - Ref. to IEC 62321-4:2013 and IEC 62321-5:2013
 Chromium (VI)
 - For Metal material - Ref. to IEC 62321-7-1:2015
 - For Plastic or Electronic material - Ref. to IEC 62321-7-2:2017
 - For Leather material - Ref. to EN ISO 17075-1:2017
 PBBs, PBDEs - Ref. to IEC 62321-6:2015

| | | | |
|--|-------|----|-------------------|
| Sample | | RL | POLYLAC® PA-746H |
| Material | | | plastic/off white |
| Lab.-No. | | | TCL221202-16 |
| Cadmium (Cd) | mg/kg | 2 | < RL |
| Lead (Pb) | mg/kg | 2 | < RL |
| Mercury (Hg) | mg/kg | 2 | < RL |
| Chromium VI (Cr VI)* | mg/kg | 8 | < RL |
| Sum of Polybrominated biphenyls (PBBs) | mg/kg | - | < RL |
| Monobromobiphenyl | mg/kg | 5 | < RL |
| Dibromobiphenyl | mg/kg | 5 | < RL |
| Tribromobiphenyl | mg/kg | 5 | < RL |
| Tetrabromobiphenyl | mg/kg | 5 | < RL |
| Pentabromobiphenyl | mg/kg | 5 | < RL |
| Hexabromobiphenyl | mg/kg | 5 | < RL |
| Heptabromobiphenyl | mg/kg | 5 | < RL |
| Octabromobiphenyl | mg/kg | 5 | < RL |
| Nonabromobiphenyl | mg/kg | 5 | < RL |
| Decabromobiphenyl | mg/kg | 5 | < RL |
| Sum of Polybrominated diphenyl ethers (PBDEs) | mg/kg | - | < RL |
| Monobromodiphenyl ether | mg/kg | 5 | < RL |
| Dibromodiphenyl ether | mg/kg | 5 | < RL |
| Tribromodiphenyl ether | mg/kg | 5 | < RL |
| Tetrabromodiphenyl ether | mg/kg | 5 | < RL |
| Pentabromodiphenyl ether | mg/kg | 5 | < RL |
| Hexabromodiphenyl ether | mg/kg | 5 | < RL |
| Heptabromodiphenyl ether | mg/kg | 5 | < RL |
| Octabromodiphenyl ether | mg/kg | 5 | < RL |
| Nonabromodiphenyl ether | mg/kg | 5 | < RL |
| Decabromodiphenyl ether | mg/kg | 5 | < RL |

Notes:

- < = less than
- RL = Reporting Limit
- n.a. = not applicable
- mg/kg = milligram per kilogram
- * Once the total Cr content in metal/ plastic or electronic sample is found to be exceeded the limit, the Cr (VI) content will be confirmed with reference to IEC 62321-7-1:2015/ IEC 62321-7-2:2017

| | Cd | Cr(VI) | Pb | Hg | PBBs | PBDEs |
|---|-----|--------|------|------|------|-------|
| Maximum permissible Limit acc. to 2011/65/EU (mg/kg) | 100 | 1000 | 1000 | 1000 | 1000 | 1000 |

Test Report No.: 238550813b6 001

Page 3 of 6

Test Method : BBP/DBP/DEHP/DIBP - Ref. to IEC 62321-8:2017
 Halogen - Following EN 14582; determination by I.C.

| | | | |
|------------------------------|-------|----|-------------------|
| Sample | | RL | POLYLAC® PA-746H |
| Material | | | plastic/off white |
| Lab.-No. | | | TCL221202-16 |
| Benzylbutylphthalate (BBP) | mg/kg | 50 | < RL |
| Dibutylphthalate (DBP) | mg/kg | 50 | < RL |
| Diethylhexylphthalate (DEHP) | mg/kg | 50 | < RL |
| Diisobutylphthalate (DIBP) | mg/kg | 50 | < RL |

| | BBP | DBP | DEHP | DIBP |
|--|------|------|------|------|
| Maximum permissible Limit acc. to (EU) 2015/863 (mg/kg) | 1000 | 1000 | 1000 | 1000 |

| | | | |
|---------------|-------|----|-------------------|
| Sample | | | POLYLAC® PA-746H |
| Material | | | plastic/off white |
| Lab.-No. | | | TCL221202-16 |
| Halogen | Unit | RL | Result |
| Fluorine (F) | mg/kg | 50 | < RL |
| Chlorine (Cl) | mg/kg | 50 | < RL |
| Bromine (Br) | mg/kg | 50 | < RL |
| Iodine (I) | mg/kg | 50 | < RL |

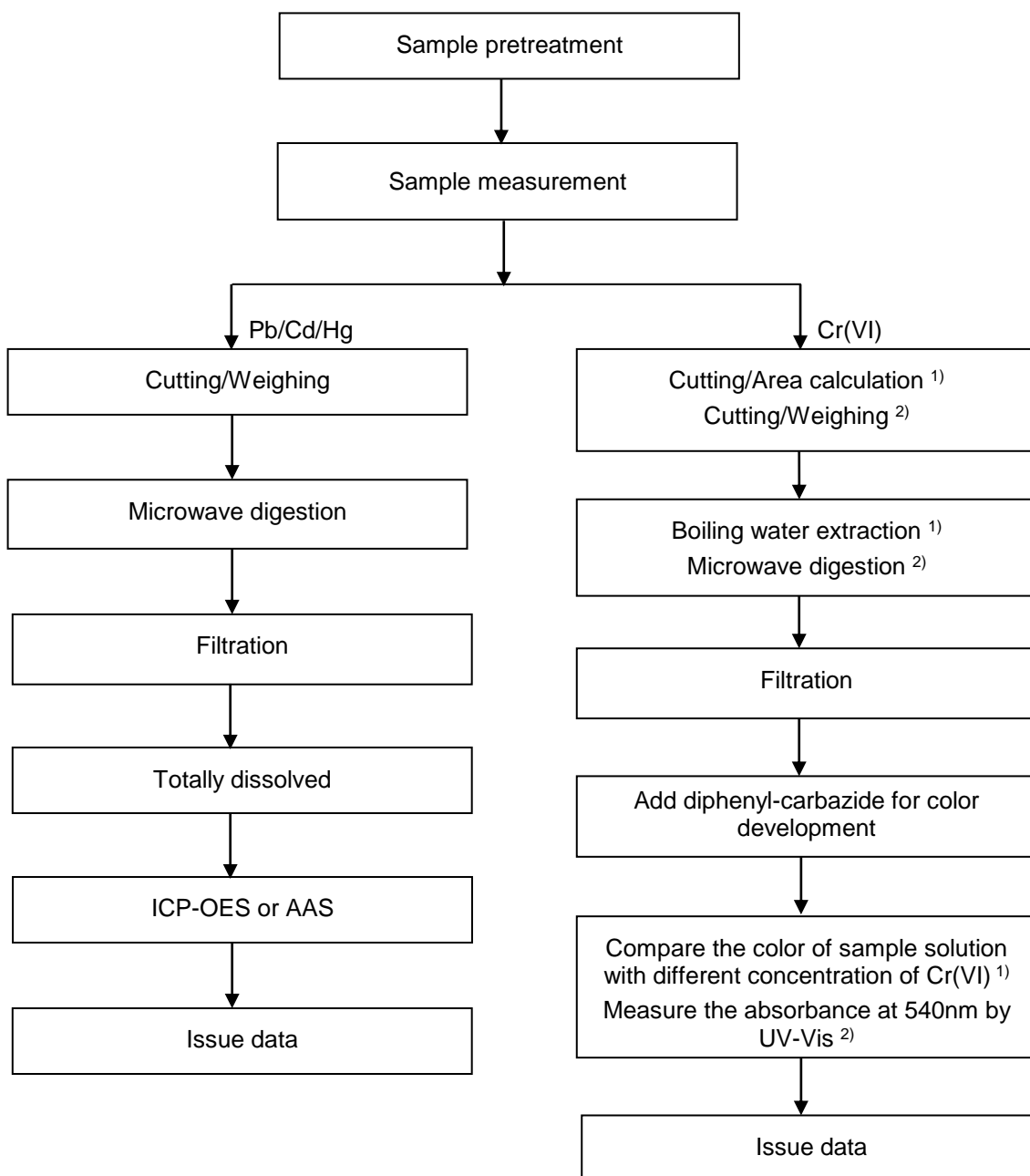
Notes:

- < = less than
- RL = Reporting Limit
- n.a. = not applicable
- mg/kg = milligram per kilogram

Test Sample

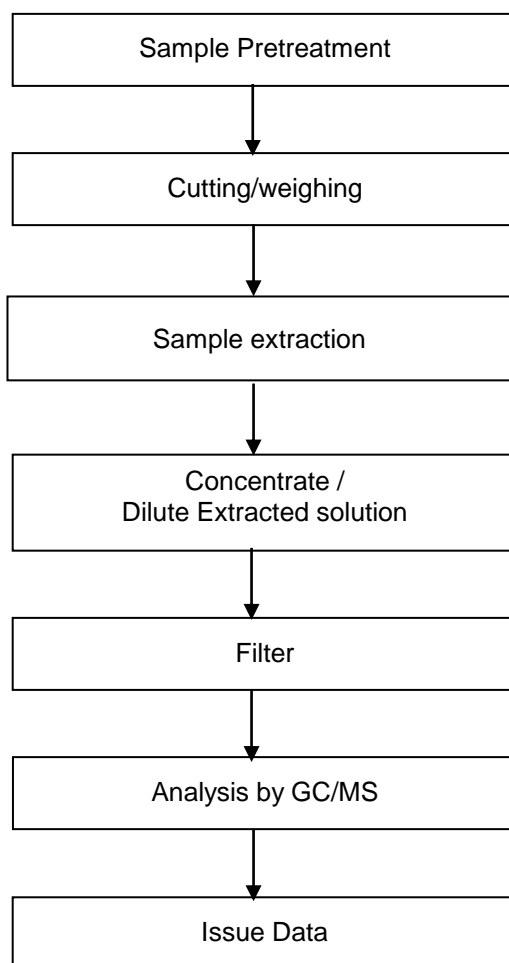
Testing procedure:

RoHS (Pb, Cd, Hg, Cr(VI))

Notes: ¹⁾ For metallic material²⁾ For non-metallic material

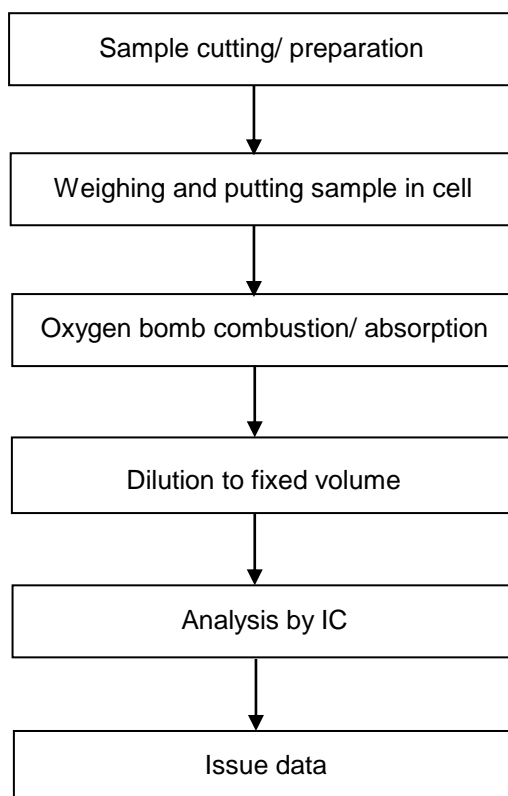
Testing procedure:

RoHS (PBBs/PBDEs, DEHP/DBP/BBP/DIBP)



Testing procedure:

Halogen



--- End of Test-Report ---